

Mailing Label

NEWSLETTER OF THE FRIENDS OF WHYALLA CONSERVATION PARK PO BOX 805 WHYALLA SA 5600

## Working Bee

A lot of the work at the February working bee, was directed towards getting the walking trail into good shape for the Caravan and Motor-home walks in late March.

The following tasks were completed. Rod and Clint removed the damaged lock from the gate at Wild Dog Hill and replaced it with a toughened lock.

Bev and Marg did a cleanup of the walking trail and pruned back branches that were intruding on the path.

David, Ella, Rod, Marg and Clint moved several tonnes of Metserv fines from the two stockpiles and spread them onto the trail. This has helped to more clearly define the trail in the area closest to the sign shelter.

Denise and Bev fed the masses magnificently!!

## PARK PATROL ROSTER

**On weekends, members of the Friends group volunteer to visit the park and record any offences, as well as checking the toilet. Volunteers need not approach offenders, just note the registration number and let the President know.**

### This month's volunteers are:

21st & 22nd Feb	Garretts
28th & 1st Mar	Nields
7th & 8th Mar	Fennel
14th & 15th Mar	Volunteer needed
21st & 22nd Mar	Volunteer needed
28th & 29th Mar	Volunteer needed

## CALENDAR

March 7th	Roadside Cleanup Lincoln Highway 8.30am
March 13th & 14th	Westland Display
March 21st	Films in the Park
March 31st & April 2nd	CMCA Guided tours of Wild Dog Hill
April 3rd	CMCA Film Show
April 15th	Committee meeting

**Editor**  
**Clint Garrett** PO Box 805  
**Whyalla SA 5600** Phone 0417-854-887  
Email [clinmarg@ozemail.com.au](mailto:clinmarg@ozemail.com.au)



Newsletter of the  
Friends of Whyalla Conservation Park  
PO Box 805 WHYALLA SA 5600  
Web: [www.fwcp.org](http://www.fwcp.org)  
Volunteers Working for Conservation



Volume 21  
No 9  
March  
2009



## PRESIDENT'S MESSAGE

The Office of  
Volunteers  
grant of \$900  
has been

spent on buying a new spray unit and safety equipment for those who use it.

As a group, our funding position at the moment is satisfactory, but not brilliant. We have not had a plant sale for the last two years due to the water restrictions. The result of this is we have less to spend than we would normally have.

The Film Show at Wild Dog Hill on the 21st of March will be an opportunity to raise some funds. You will find a flyer for the Film Show with this newsletter. Please find a public place to display it.

We will be having a display in the Westland Shopping Centre on the 13th and 14th of March to promote the Film night. City Council has been very supportive by donating \$100 worth of vouchers for our raffle. If you are able to donate an hour or two of your time to man the display, please give me a call

We will also be looking for help with the Film Show. There is supper to be provided and served as well as vehicles and people to be managed. Again, please let me know if you are able to help with this

We will also need 2 guides to help with guiding two tours

during the CMCA Rally on 31/3 and 2/4.

You will notice that the Park Patrol; Roster has three blanks on it at this stage. For those who have not been on the roster, it is simple. Drive out to the park on the weekend, check & clean the toilet, check for vandalism, read the traffic counters and rain gauge.

Please let Denise know if you are able to help with the roster.

I look forward to seeing you at one of the forth-coming events

*Clint Garrett*



**Ella, Rod and Marg lay fresh gravel on the walking trail in preparation for the CMCA guided walks.**

**NO WORKING BEE ON MARCH 14TH**

## Best of Both

The Whyalla City Council is to be congratulated for voting unanimously to call on the state government to reconsider the whole planning process for deep water export port in this region. In doing this, Council was taking notice of the community consultation process that took place in December.

That consultation found that the community supported industrial development, but not at Point Lowly. It was felt that the Lowly Peninsula was best left as a recreation/tourism area.

At the moment, the government's preferred option is to have a port and its associated storage areas and other infrastructure on the Lowly Peninsula. A new jetty of just over 3 kilometres in length would pass through the best cuttlefish breeding habitat to reach a pocket of deep water sufficient for Cape Size vessels to load in. These vessels are up to 280 metres long and need 20 metres of water plus a safety margin to operate in. (Shown in blue)

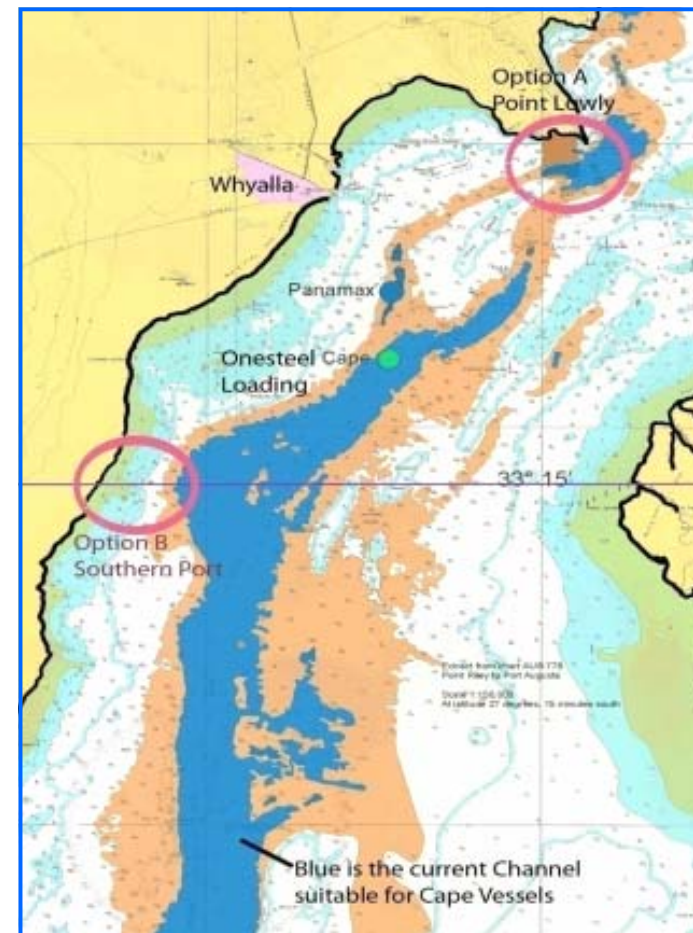
In July, John Scott identified a better location for a port approximately 25 kilometres south of the city. This is the area shown as option B on the map at right. Since that time a group of engineers and other professionals has been working on developing John's idea and promoting it to the relevant committees and local community.

The Alternative Port Working Party has developed a SWOT analysis of the two ports which shows that there are advantages to the mining industry and to the local community if the southern port option becomes the actual port.

As can be seen from the map, the depth of water at low tide between Whyalla and Point Lowly is less than 20 metres. (Shown in pale tan). The area of deep water at the proposed Point Lowly port is small and is impacted by the SANTOS hazard zone.

At Mullaquana, there is a very large area of water which is between 20 and 24 metres in depth. There is ample area for multiple ships and no restrictions on movement. It is also 2 hours steaming time closer to the mouth of Spencer Gulf.

There is also a very large area of almost flat land available at the southern site which would allow for future expansion of the port if needed.



Spencer Gulf Hydrography and Port Locations

I would urge members to take an interest in this issue. Write to the minister to support a full investigation of the potential of the southern port site. The Lowly Peninsula is too important to lose to a poorly thought out project. We can have the best of both: industrial development and environmental protection.

Hon. Patrick Conlon  
Minister for Infrastructure  
GPO Box 2969  
ADELAIDE SA 5001  
Email: minister.conlon@saugov.sa.gov.au

## From The Committee

At our February Committee meeting, these were some of the matters covered.

### Cleanup Australia Day

We will meet at the Lincoln Highway gate at 8.30 am, and work on the park side of the Highway. This will be a short session, finishing at 10.30 am. This will be followed by training by Michael Wigg in the use of GPS.

### Westland Display

The major reason for the display is to advertise the film show. We will have a raffle to attract "guests". Council has donated \$100 in prizes for this raffle.

### Films in the Park

The films for this event were selected. There will be several cartoons, a Russell Coight episode, with the feature film being "The Castle".

### Films at CCMA

This will be Friday 3rd April. The film selection will include the 3 Stooges, "The Plank" and "Barry McKenzie Holds His Own."

### Trail Header

David, Denise and Marg have worked on the final design of the signage to go into the sign shelter. Now we need to find some funding to pay for the signs and get NPWS approval for the new signs.

### Insurance

Denise and Lance have checked the insurance status of the shed and contents. The sheds are insured, however the cost of insurance for the contents is more than we can justify.

### Vegetation Management Plan

We are still waiting for details of this to be finalised. It will allow us to access \$8,000 For animal and plant control.

## Bird of the Month



### EMU

The name Emu is reputed to come from the Portuguese word *ema*. Originally meaning 'crane' it appears to have been applied to large upstanding birds.

Most parts of Australia are host to this large flightless bird. It is a nomadic wanderer with movements largely dependent upon availability of food and water. It is omnivorous, seeds, fruits, insects, and growing tips of plants are its main menu. Considerable flocks will gather to follow locust plagues.

During pair formation the females dominate the males. This may explain why the males are literally left holding the baby.

After laying five to fifteen large green eggs she wanders off leaving him to do all the work. For 55 days he faithfully incubates the eggs. Normally he will not leave his post to eat, drink or defecate. Upon hatching the striped chicks can feed themselves on fresh green growth and follow dad about. They usually remain together in parental care for six months but may not disperse until months later.

An adult and 2 chicks were seen by Denise in the park at our February Working Bee

*Ella Smith*