

Mailing Label

NEWSLETTER OF THE FRIENDS OF WHYALLA CONSERVATION PARK PO BOX 805 WHYALLA SA 5600

Mother's Day Walk
Wild Dog Hill 2.00pm
Sunday May 10th



**Afternoon Tea
 Gold Coin Donation**



A
**Friends of Whyalla Conservation Park
 Community Event**

**Your donation of scones or
 other finger food for this
 event would be
 appreciated.**

**Please contact Clint or
 Marg on 0417-854-887**

PARK PATROL ROSTER

On weekends, members of the Friends group volunteer to visit the park and record any offences, as well as checking the toilet. Volunteers need not approach offenders, just note the registration number and let the President know.

This month's volunteers are:

25th & 26th April	Holds
2nd & 3rd May	Poyner/Sharp/Smith
9th & 10th May	Nields
16th & 17th May	Fennells
23rd & 24th May	Deans
30th & 31st May	Garretts
6th & 7th June	Volunteer needed

CALENDAR

May 9th 9.00 am	Working Bee
May 10th 2.00 pm	Mother's Day Walk
May 20th 7.30 pm	Committee Meeting 71 Jenkins Avenue
June 13th 9.00 am	Working Bee
June 17th 7.30pm	Committee Meeting 71 Jenkins Avenue

**Editor
 Clint Garrett
 PO Box 805 Whyalla SA 5600
 Phone 0417-854-887
 Email clinmarg@ozemail.com.au**



Newsletter of the
 Friends of Whyalla Conservation Park
 PO Box 805 WHYALLA SA 5600
 Web: www.fwcp.org
 Volunteers Working for Conservation



Volume 21
 No 11
 May
 2009



PRESIDENT'S MESSAGE

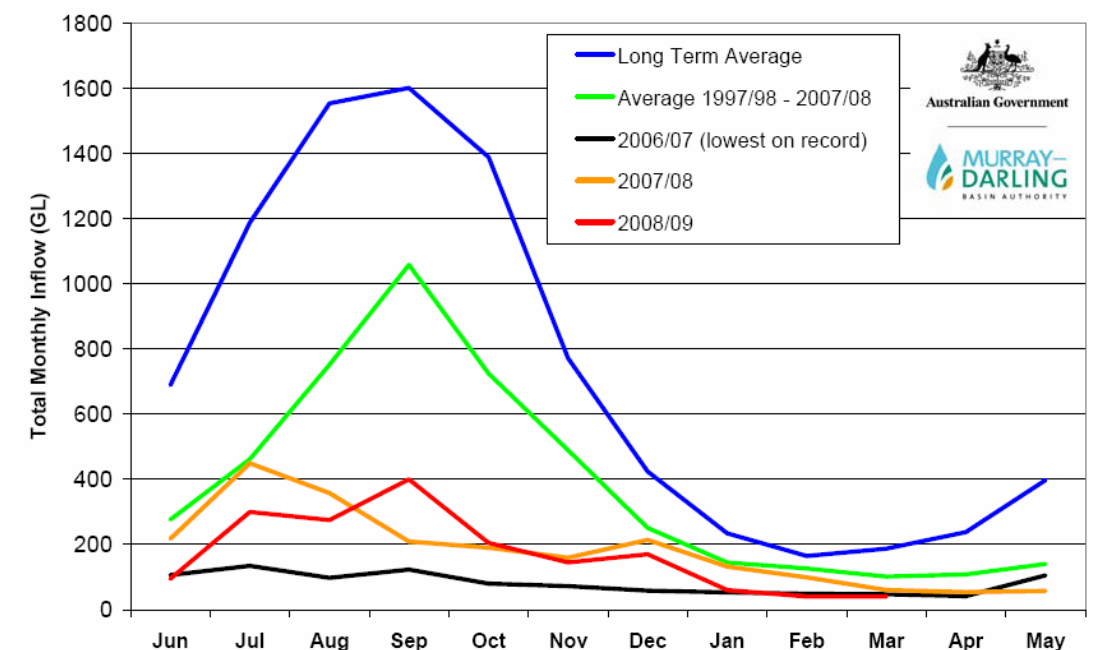
Water is a truly remarkable substance. Wherever there is water on the earth there is life—indeed, water is an essential for life. Water is unusual in that it can exist in all three phases at temperatures that are normally found on the surface of the earth. It is a remarkable solvent, which can carry many chemicals in solution. The water cycle tells us that we can never run out of water, because the natural system continually recycles water. However this tells us nothing about the location of that water. In southern Australia, it is quite clear that we are running out of water as can be seen from the graph below. Inflows to the Murray so far this

year are below that of the driest year ever (2006-07) and there is only enough water for critical human needs to last until September 2010, unless there is a dramatic change in rainfall. The predicted rainfall for the next three months is for less rain than average, rather than more.

In this situation, desalination is a sensible option to consider. However the site for desalination plants needs to be carefully chosen so as to reduce the damage that the discharge of brine and de-scaling chemicals can do.

The choice of Point Lowly as a site for a desalination plant is particularly poor. Modelling by Joachim Kempf shows that at low tide, there will be significant salinity issues. For this reason, the plant should either be sited well south on Spencer Gulf or even better near Elliston. Similarly, the Adelaide desalination plant would be better sited on Encounter Bay, where wave action is far stronger.

Clint Garrett



Murray system inflows (excluding Snowy and Darling inflows). Source: MDBA Drought Update April 2009

WORKING BEE

May 9th Removal of old fence line in the southern section of the park
 Meet at the South West Grid 9.00am

From the Committee

Film Nights

These raised a total of \$450. The show at Wild Dog Hill raised most of the money as it was well attended by over 160 people.

Car Park Re-grade

Clinton reported that the carpark has been re-graded to level it. It is still very dusty and will need a major rain to settle it.

Mother's Day Walk

This will be from Dog Hill to the hill immediately west and return. Assemble at Wild Dog Hill. The walk should take about 1 hour. We will do a number of activities along the way to make the day more enjoyable.

EPNRM Volunteer Grant

The timeline for this has been extended. Denise suggested that we apply for funding for a chemical storage cupboard. This is worth about \$1750. We have now done this and applied for funding for safety glasses and spoggles.

Trailer Cage

Lance has suggested that we use the cage for activities such as the roadside cleanup and Film night only. For other events such as working bees, he suggests that we have a set of H frames made. He & Clint will be putting a proposal together about this.

AGM

Although July 25th is still some time away, the committee has started to do the planning for this. Start time will be 4.00 pm, followed by the formal meeting and a guest speaker. We will conclude with a Barbeque.

We need some new committee members and there is a need for a Correspondence Secretary. Members can be mentored in these roles if they wish.

CONGRATULATIONS TROY & MITCHELL

Committee member Troy Brougham married his partner Mitchell Hoffman in Belair National Park on April 11th. Congratulations to you both.

CMCA Rally

Two guided tours of Wild Dog Hill were scheduled as part of the CMCA rally. Thursday's tour produced 10 willing rallyists. Ella and Clint took them on what was a quite enjoyable walk. Our visitors were enthusiastic and inquisitive. (see photo below)

The local parrot population must have known that there were visitors to impress. Port Lincoln, Blue Bonnet and Mulga Parrots all made an appearance.

The Film Show on Friday night was spoilt by 45 kmph winds and drizzle. We had just over 30 visitors. Thank you to the Friends members who came out to help on what was a dismal evening.



Volunteer Forum

The Eyre Peninsula Natural Resource Management Board's Volunteer Co-ordinator, Kathryn Hardwick-Franco has organised a forum for local organisations.

The forum will be held at the Whyalla Westland Hotel Motel on Monday May 11th starting at 11am and finishing at 5:30pm. There will be with a Forum Dinner 6:30 – 10:30pm.

We will have a PowerPoint Display at the Forum. Members are welcome to attend

Frogmouths

Margaret Prenzel sent three of her photographs in response to Ella's article on Tawny Frogmouths.

"Thought you might be interested in a couple of photos we have taken just outside our back door. In the last 3 years the mother has had 6 young in total each time using the same nest just a few pieces of stick"
Margaret and Perce



Bird of the month

VARIEGATED FAIRYWREN

This species of fairy-wren is the most common wren around Whyalla, and the most widespread across Australia. It is also the one most likely to venture into your garden.

While the female is the usual fairy-wren grey-brown, the breeding male adorns the front half of his body in colour which can broadly be described as blue above and black below, with a band of bright chestnut across the shoulders.

They forage for food mostly near ground level in and around shrubs. They will eat a wider range of insects than most fairy-wrens. If it will fit into their mouth they will probably eat it.

Bugs, beetles, wasps, flies, grasshoppers and termites are on the menu. Breeding is similar to other fairy-wrens. Nesting in spring, they build a grassy ball with a side entrance in a low shrub. Up to 4 young will have hatched in about 2 weeks and fledged in a further two. The family group of about seven adults all help to feed and raise the next generation.

